



# MONTHLY MEMBERSHIP PROGRESS REPORT

District 27 D1

Results as of: 10/31/2017

GMT: MICHAEL MOLEND

LOCATION WISCONSIN

GMT CA

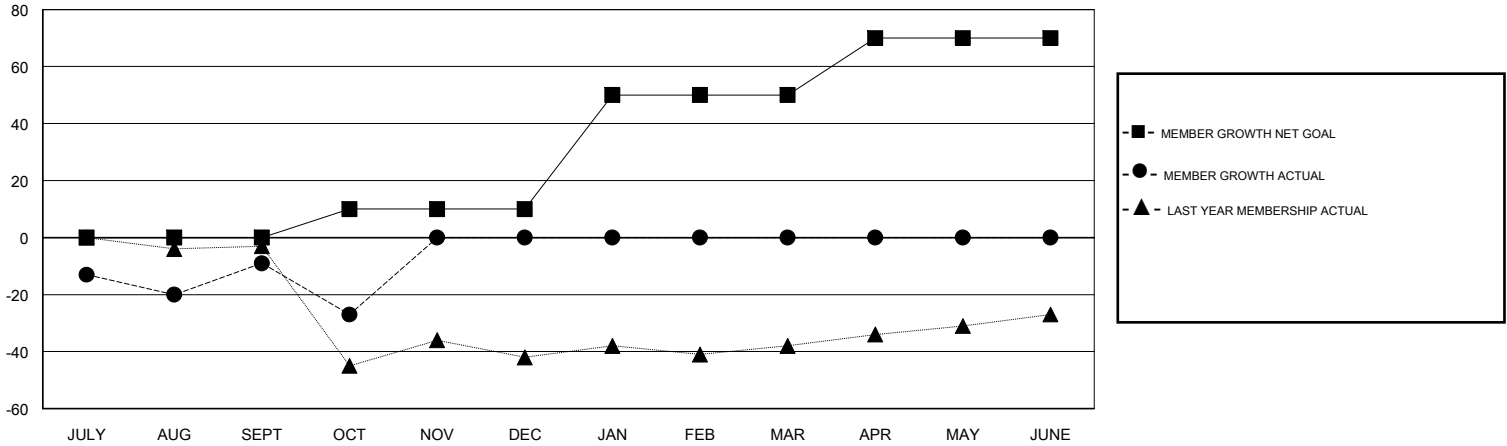
Clubs			
RESULTS FOR 2017-2018			
QUARTER	NEW CLUB GOAL	NEW CLUBS	DROPPED CLUBS
JULY/AUG/SEPT	0	0	0
OCT/NOV/DEC	0	0	0
JAN/FEB/MAR	1	0	0
APR/MAY/JUNE	0	0	0

Members			
RESULTS FOR 2017-2018			
QUARTER	MEMBER GROWTH NET GOAL	MEMBER GROWTH ACTUAL	DROPPED MEMBERS ACTUAL (including transfers)
JULY/AUG/SEPT	0	50	57
OCT/NOV/DEC	10	18	35
JAN/FEB/MAR	40	0	0
APR/MAY/JUNE	20	0	0

GOALS AND ACTUAL NEW CLUBS CUMULATIVE



GOALS AND ACTUAL MEMBERS CUMULATIVE



DROPPED CLUBS: 0	25 CLUBS OF 58 ADDED 1 OR MORE NEW MEMBERS	<u>GENDER DISTRIBUTION</u> MALE 1,665 (74.16%) FEMALE 580 (25.84%) Women Percentage Fiscal Year Goal: 25%
<u>DROPPED MEMBERS</u> DECEASED 9 CLUB CANCELLED 0 OTHER 83 TOTAL 92	<a href="#">CLICK HERE FOR CUMULATIVE MEMBERSHIP DATA</a>	TOTAL FAMILY UNIT MEMBERS 463 FAMILY MEMBERS PAYING HALF DUES 237